



HD

SERIES

With advanced multi-orbit
features and
erosion strategies



Column Movement

Hole Drilling Electric Discharge Machine

Excellent Performance	1
Mechanical Frame And Features	3
Specialized Numerical Controller	4
Specifications	5
HD ZNC	6



HD400C



HD600C

Excellent Performance with wide range of machine models

HD SERIES

An advanced CNC EDM machine created for Quality & Reliability

- EXCETEK provides a New Series of upgraded fine Small Hole Drilling EDM machines.
- Based on our technology up-gradation and innovation, we Provide Accurate function for removing the debris from the materials and our spindle axis rotation functions help drilling accurately.
- The New HD Series machines have a Rigid mechanical frame which gives high rigidity performance and easy for operational interface.
- The advanced pulse control generator, provides high accuracy machining for the applications of aerospace materials. Example: Tungsten Carbide, Titanium alloy, Nickel alloy etc.



HD800C

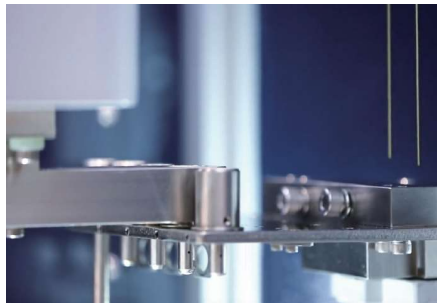
Mechanical frame & Features



8 AEC - Auto electrode Changer (Linear) (Optional)



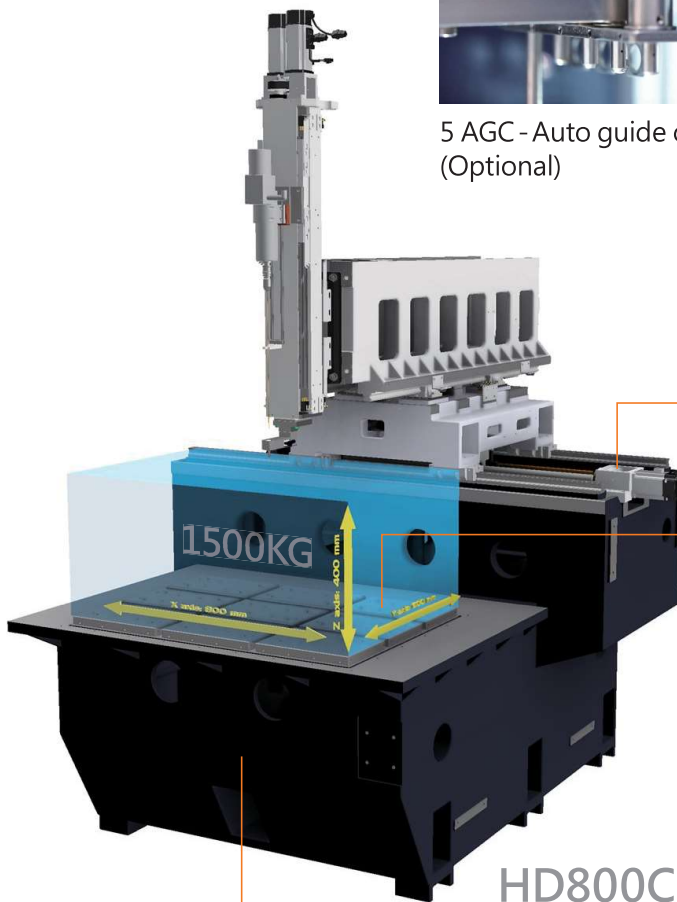
16 AEC - Auto electrode changer (Rotary) (Optional)



5 AGC - Auto guide changer (Optional)



A/B Rotary Axis (Optional)



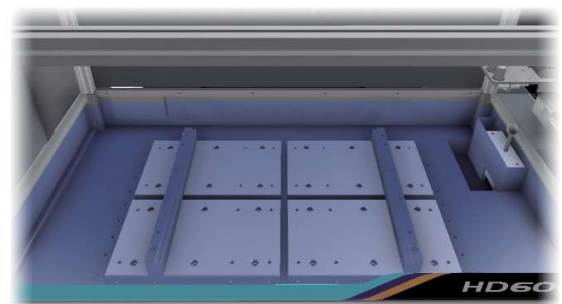
HD800C

• High-resolution, AC servo motor

• Hard Stainless Steel work table

• High rigidity mechanical frame design optimized under FEM analysis

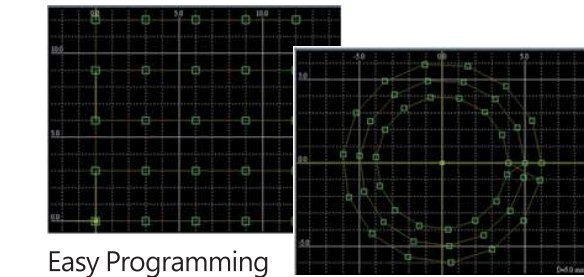
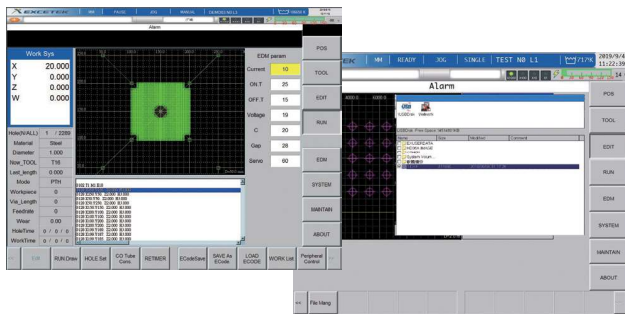
Semi-submerged work tank (Optional)
To improve hole drilling precision



The Powerful New NC Controller

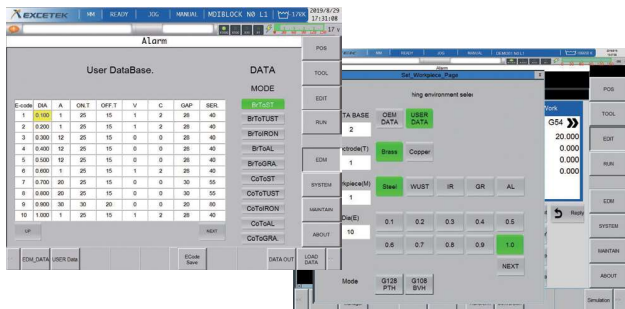
- The HD Series Hole Driller with EXCETEK Motion Controller has an optimised servo control to achieve high speed and precision.
- Input Interface: LAN, USB
- Easy setting and comprehensive EDM cutting technology database.
- Iot and Automation Solution For Smart Factory

Standard G/M Code, Wire Cut NC File Conversion.
DXF File Wire Cut NC File Conversion. (Option)

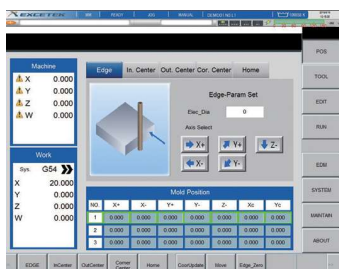


Easy Programming

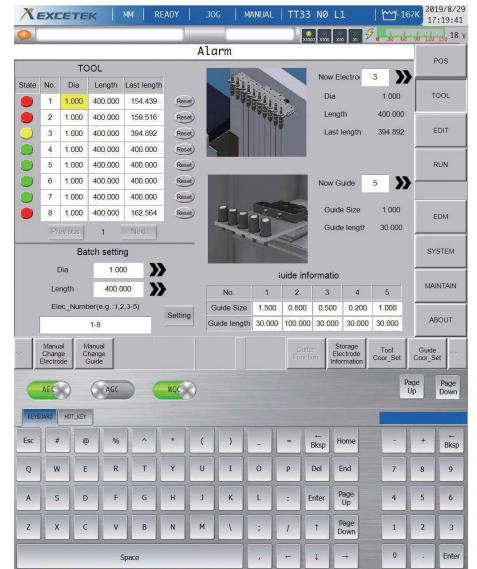
Abundance Cutting technology database



Easy Operation With Graphic Screen

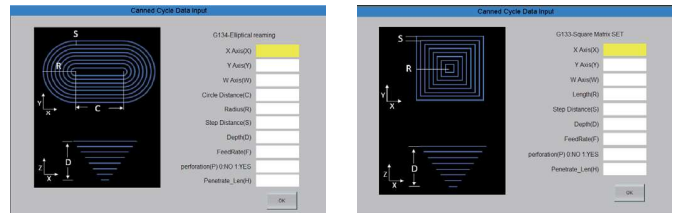


Automated Application

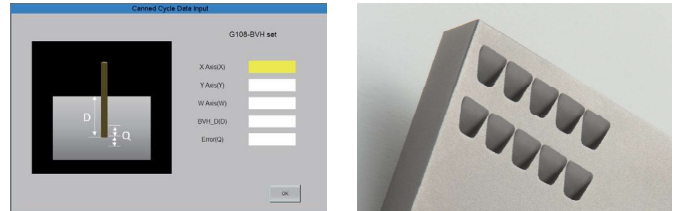


Touch Screen and Friendly Operation Interface

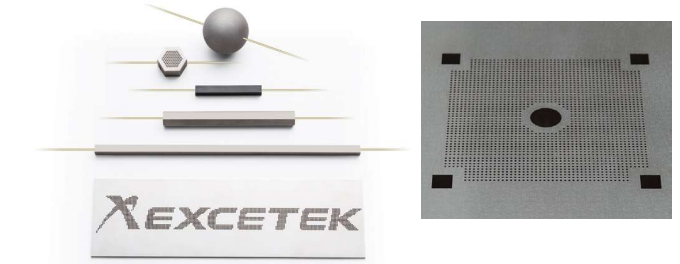
Obit Macro Machining (Optional)



Advantage function for Blind Holes

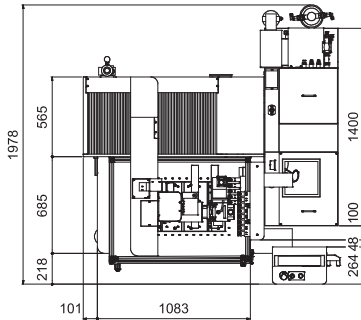


Application Examples

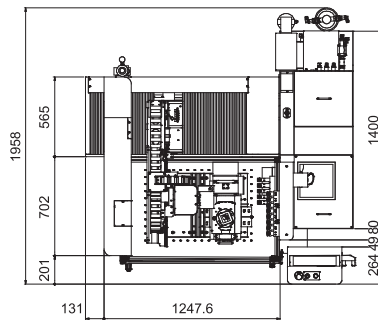


Dimensions

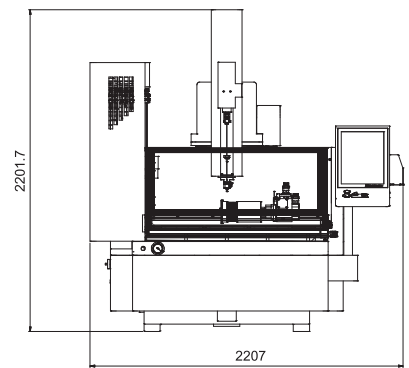
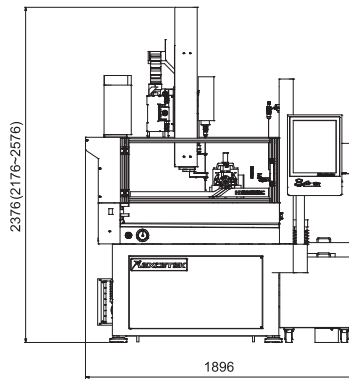
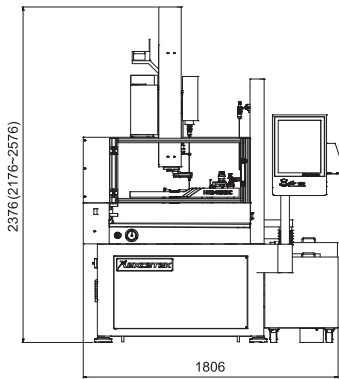
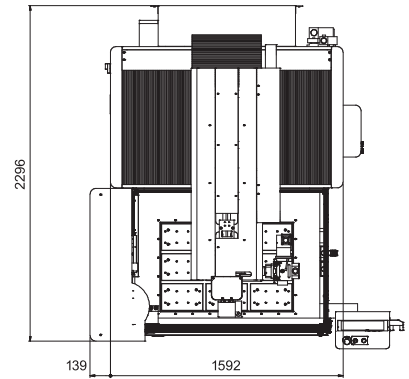
HD400C



HD600C



HD800C



Machine Specifications

MODEL		HD400C	HD600C	HD800C
Work Table Size (WxD)	mm	600 x 350	700 x 450	900 x 600
X/Y axes Travel	mm	400 x 300	600 x 400	800 x 600
Z axis Travel	mm	400	400	400
W axis Travel	mm	400	400	400
Electrode size	mm	Ø0.3 ~ Ø3.0	Ø0.3 ~ Ø3.0	Ø0.3 ~ Ø3.0
Auto Electrode Changer (Option)		8/16 pcs	8/16 pcs	16 pcs
Maxi. Electrode length	mm	400	400	500
Maxi. Workpiece size	mm	650 x 400 x 400	750 x 500 x 400	950 x 650 x 400
Maxi. Workpiece weight	kg	500	800	1500
Machine weight	kg	1630	1730	3200
Max. Machining Current	A	48	48	48
Input Power	KVA	4.0 KVA	4.0 KVA	4.0 KVA
Machine Dimension	mm	1900 x 1965 x 2600	2000 x 1965 x 2600	2505 x 2500 x 2600

*The specification provided in this catalog are subjected under factory condition.

Standard Accessories

- Electrode Chuck Ø0.3mm~Ø3.0mm x 1
- Electrode Guide Ø1.0mm x 1
- Electrode Pipe Brass Ø1.0mm x 20pcs
- Work Lamp x 1
- 240L Stainless Water Filter Tank
- Tools Box x 1
- Paper Filter PW-40-2 300 x 29 x 500mm 10 µm x 1pcs
- Paper Filter PP 10inch 5 µm x 1pcs
- Parallel Pad x 2
- Water Seal x 20pcs
- Air Chuck

CNC HD Series Optional

- A/B Rotary Axis
- Auto Electrode Changer
- Auto Electrode Chuck Ø3.1~Ø6.0
- XY Linear Scale With 1µm Resolution
- Auto Guide Changer
- Water Cooler
- Ion Exchange Resin
- CE
- IOT And Automation Solution For Smart Factory
- DXF File, Wire Cut NC File Conversion
- Stainless Semi-submerged Work Tank
- Finish Stop Device
- Max. Machining Current 75A

HD ZNC

- Pre-programmed with 7 different material types and multi-electrode size cutting conditions where User conditions also be saved.
- Z-axis auto zero function which makes easy for monitoring cutting depth process.
- Z-axis end function helps sparking move up automatically to reduce operation steps.
- Programmable wear function.
- Auto start function.
- Reduction of in/out hole size difference function.
- Standard 3 axis build with Digital Read Out display.
- Auto zero axis function.
- Inch/mm display function.
- Responsive Z-axis AC servo motor.



HD30Z



HD35Z



HD50Z



Z axis AC servo motor

Machine Specifications

MODEL		HD30Z	HD35Z	HD50Z
Work Table Size (WxD)	mm	450 x 210	600 x 300	600 x 300
X/Y axes Travel	mm	300 x 200	350 x 250	450 x 350
Z axis Travel	mm	345	345	345
W axis Travel + Manual Guide Travel	mm	0+150	200+150	200+150
Electrode size	mm	Ø0.3 ~ Ø3.0	Ø0.3 ~ Ø3.0	Ø0.3 ~ Ø3.0
Maxi. Electrode length	mm	400	400	400
Maxi. Workpiece size	mm	660 x 410 x 150	810 x 430 x 350	990 x 460 x 350
Maxi. Workpiece weight	kg	150	350	450
Machine weight	kg	930	1130	1730
Max. Machining Current	A	48	48	48
Input Power	KVA	4.0 KVA	4.0 KVA	4.0 KVA
Machine Dimension	mm	1450 x 1250 x 2100	1520 x 1287 x 2300	2036 x 2075 x 2290

*The specification provided in the catalog are subjected under factory condition.

Standard Accessories

- Electrode Chuck Ø0.3mm~Ø3.0mm x 1
- Electrode Guide Ø1.0mm x 1
- Electrode Brass Tube Ø1.0mm x 20pcs
- Work Lamp x 1
- 80L Stainless Water Filter Tank
- Tools Box x 1
- Paper Filter PW-40-2 300 x 29 x 500mm 10µm x 1pcs
- Paper Filter PP 10inch 5µm x 1pcs
- Parallel Pad x 2
- Water Seal

HD ZNC Optional

- Electrode Chuck Ø3.1mm~Ø6.0mm
- CE
- Finish Stop Device
- Air Chuck

HD

SERIES

With advanced multi-orbit features
and erosion strategies



EXCETEK TECHNOLOGIES CO., LTD.

No.10, Fenggong 3rd Rd., Shengang Dist.,
Taichung City 42942, Taiwan

TEL: +886 4 2520 0688

FAX: +886 4 2520 0111

www.excetek.com

info@excetek.com.tw

No.S10330